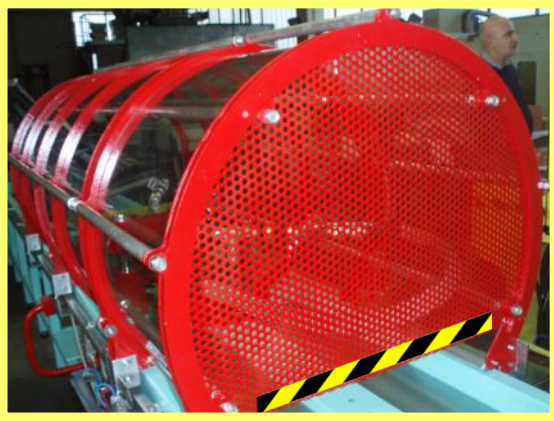


**Unit and optional components 1/3**

**Protection grid against end cup blow.  
OPTTT000017**



**Interlocked grill protecting  
from rod escape/expulsion.  
OPTTT000018**



**Polycarbonate (PC)  
protection of split type.  
OPTTT000019**



**Closing cylinder of pneumatic type  
(for plunger cylinders) with stroke  
gauging system.  
OPTTT000021**



**Internal Rod driving carriage.  
OPTTT000023**



**External rod driving carriage.  
OPTTT000024**



**Unit and optional components 2/3**

**Laser type linear sensor for rod stroke and position gauging.  
OPTTT000022**



**Heavy type grating platform with drip pan.  
OPTTT000036**



**Very large capacity drip pan with platform extended under the support unit.  
OPTTT000037**



**Grating flooring under service area with or without drip pan (to be quoted based on area layout).  
OPTTT000038**



**Additional Tank (200-400-600-1000 lt).  
OPTTT000039**



**2 axis removable Joystick with cable.  
OPTTT000041**



**Unit and optional components 3/3**

Remote control stand with screen and controls.  
OPTTT0000042



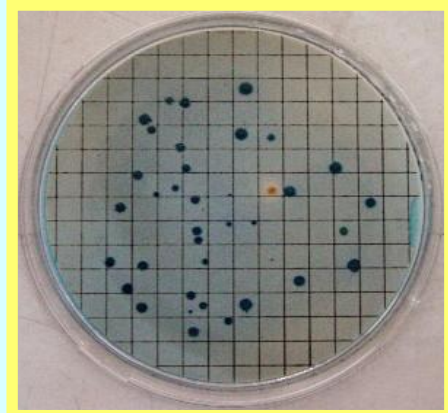
Additional filtering system for very fine filtration with timer.  
OPTTT0000044



Dripping system from A and B cylinder ports for MILLIPORE TEST.  
OPTTT0000045



MILLIPORE ON-LINE system to achieve the filtering membrane from the machine.  
OPTTT0000046



External cylinder valve controls from desk.  
ACSTT0000067



Industrial keyboard with trackball.  
ACSTT0000092

